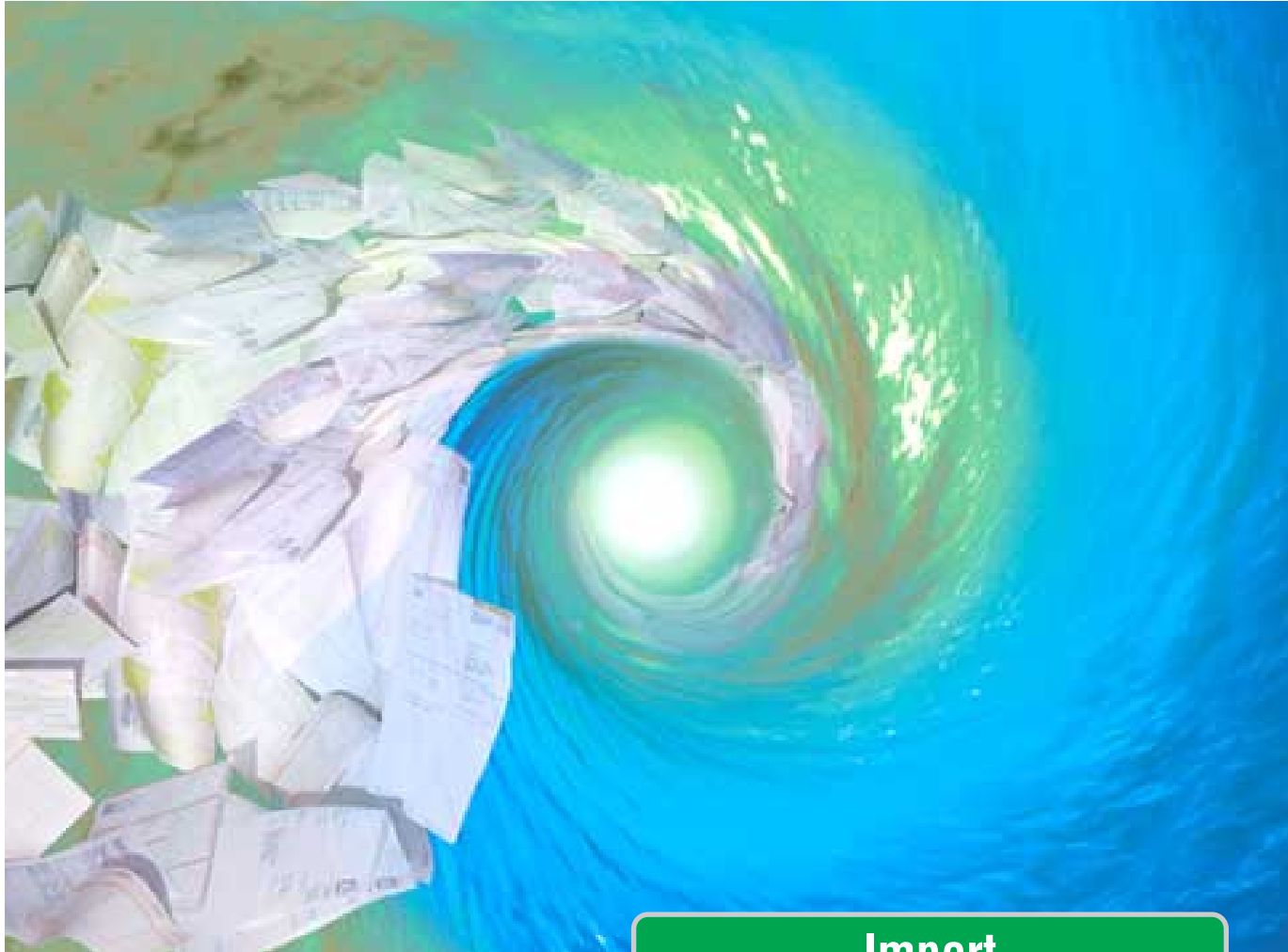


More information from your documents with ICR



Import

Classify

Interpret

Postprocess

Export

A Quantum Leap in Recognition Technology

less time – less effort – less costs

FormsRec® is the efficient document recognition and analysis system for Windows NT. Using your daily postal input FormsRec® can:

- import the scanned images
- classify the image types
- interpret,
- correct
- and finally export the data.

Using FormsRec® you can process structured, semi-structured and unstructured documents economically, flexibly and accurately.

FormsRec® Solutions: Regain your investment within a year

FormsRec® has an enormous rationalization effect. Our customers typically regain their capital investment within six to twelve months. Our advisers will be pleased to give you a calculation, based on your own concrete examples, of how much you can expect to save!

The FormsRec® Advantage – a Fast Pay-Off

More information from your printed documents

With FormsRec® you can quickly capture all the information you require to process them completely. Using extensible interpretation rules the program finds the appropriate field-data in your documents, forms and invoices. You can train the system yourself to adapt to your changing needs. It couldn't be more flexible!

Optimal data quality

ICR recognition technologies are state-of-the-art: Our correction and verification tools minimize the rate of errors. Even with skewed, disoriented or otherwise flawed images, you are assured of optimal recognition results.

FormsRec® is rational

The system processes your daily mail and extracts such information as addresses, amounts, dates from chosen reading areas fully automatically. Bridge the gap between printed documents (non-coded information) and electronic data (coded information).

Reduce your data capture times

FormsRec AI•DA® reduces interactive processing by extracting relevant data during document analysis using interpretation rules. The time for processing these documents is reduced drastically.



FormsRec AI•DA®: The right system for any application

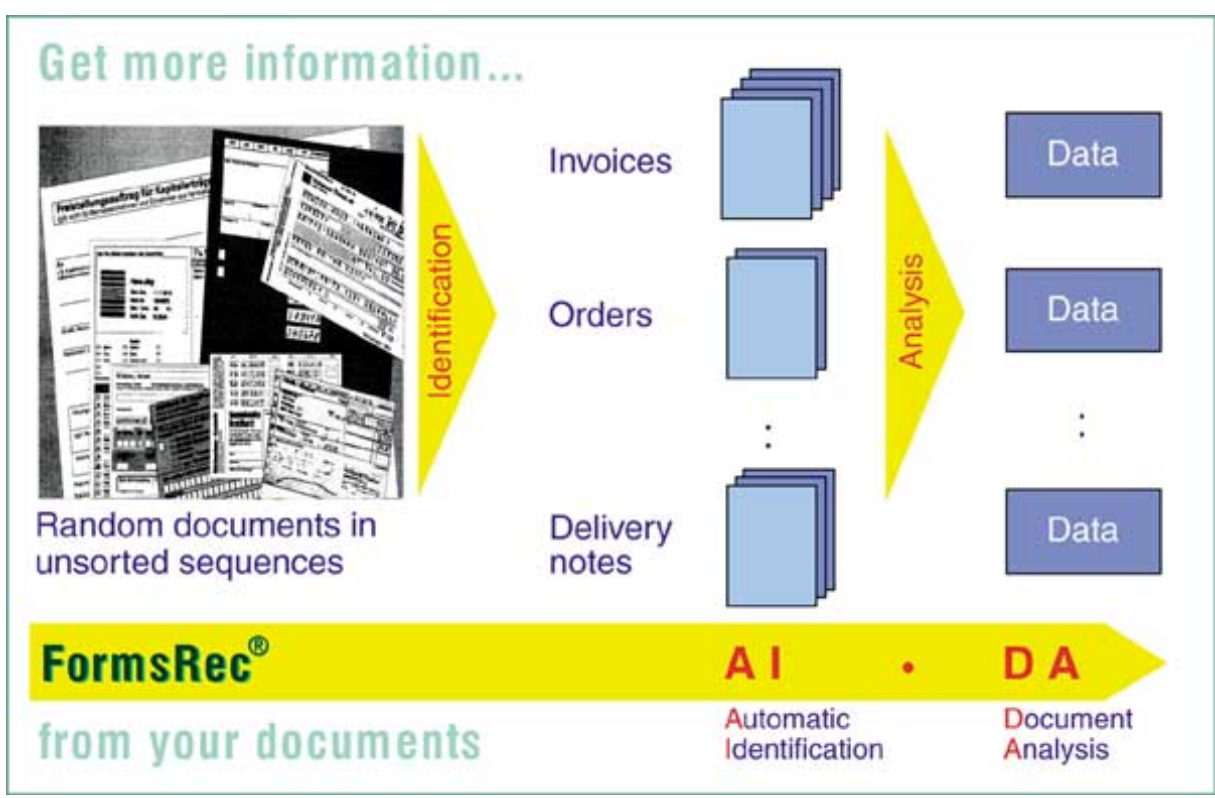
FormsRec AI•DA® is a software solution spanning many branches: banks, insurance companies, freight carriers and in fact any company, institute or office where documents must be read and analysed automatically.

Many tasks are accomplished using the standard, off-the-shelf FormsRec AI•DA® product. Together with our add-on modules, comfortable customizing mechanisms and

individually tailored system integration we can solve your branch or company-specific jobs. Let us advise you!

We would be pleased to inform you about the large installations we have made at prestigious customer sites such as Daimler-Chrysler AG or the German Post-Office. Ask for our company literature.

What do you want to read today?



Preparation

Scanning from forms, paper-faxes etc.

E-Mails

Remote Data, Internet, Extranet, Digital-Fax

Import

Images and Digital Data

Preparation

The task: To capture all relevant information from incoming documents and forms (printed or electronic) for back-end data processing systems.

Import

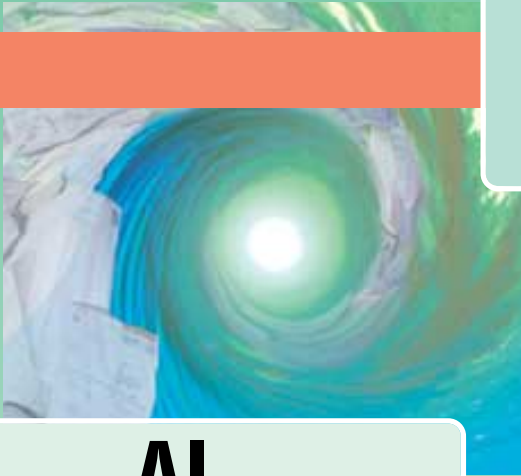
FormsRec® requires in the standard version TIFF G4 images. Depending on the type and quantity of the incoming images any of the market standard scanners can be used (minimum resolution 200 dpi).

Integrated image preprocessing functions guarantee optimum recognition results

- Line, box and noise removal
- Image deskew
- Flexible image adjustment on the document as a whole or on individual fields
- Auto-rotation

Classification

Interpretation



AI Automatic Identification

ICR

Fuzzy-Logic

Voting

DA Document Analysis

Classification

FormsRec® AI (Automatic Identification)

FormsRec® AI classifies different documents into document classes (e.g. invoices, forms, orders etc.) or into more detailed document types (e.g. invoices from a particular vendor).

Two methods of document classification:

- the **global method** classifies objects in a document based on a textual analysis using interpretation rules.
- the **trained method** searches for certain known features of a document at constant or variable positions on the page.

Interpretation

ICR

We offer you the state-of-the-art in document recognition technologies. Intelligent Character Recognition with FormsRec® means:

- Reading handprint and machine print characters
- Optical mark reading
- Recognition of all typical barcodes

Voting: Let the experts decide

The Voting method analyses the results of different reading engines to obtain an optimal overall recognition result. The recognition quality is improved by combining the strengths of several engines.

Fuzzy-Logic reduces the Error Rate

Fuzzy-Logic can compare recognition results with an existing database, for instance an address list, in a fault tolerant manner. This saves time and reduces the effort needed during correction.

FormsRec® DA (Document Analysis)

The Document Interpreter analyses data captured from images on the basis of predefined interpretation rules:

- Forms definitions
- Text analysis rules
- Address search
- Field structure analysis (e.g. structural description of date fields DD.MM.YY)

Postprocessing

Export

COR
image-based correction

COM
mass verification

**Data and image
export to
file or database
(ODBC)**

Postprocessing

Image and field-based correction

FormsRec® COR checks the individual reading areas for rejected and substituted characters. Database queries, checksums etc. are all possible during manual correction. The optionally fixed screen entry region has proved itself to be particularly ergonomic in easing the task of manual correction, since the eye does not have to wander around the screen. The correction screen layout is freely definable.

Mass Verification

FormsRec® COM has proven itself particularly useful when correcting numbers. The module displays individual characters of a particular class (say all the „1“s) together on the screen. Shown in this context, the eye can pick up badly-read characters quickly. It is particularly useful for fields where no logical plausibility checks can be applied.

Export

FormsRec® can export the captured data to an ASCII interface for further processing by back-end systems. This can happen fully automatically after the data is released according to the validation logic.

Alternatively the data can be transferred via ODBC interfaces to any compatible database. FormsRec® is compatible with SAP and other standard interfaces.

Processing

Storage

Archival

Transfer

Processing

FormsRec AI•DA® has completed its' task. The images and captured data can be processed or archived in the back-end system.



More information from your documents



What do you want to read today?

Minimum system requirements

Server:

Pentium III 500 MHz CPU
256 MB RAM
Operating System: Windows NT 4.0

Client:

Pentium II 333 MHz CPU
128 MB RAM
Operating Systems:
Windows 95, 98, NT 4.0, 2000

Throughput

depends on the CPU, bus, operating system and graphics adapter in your PC, as well as on the image resolution, image preprocessing functions and print quality.

Reading Quality

- Exact measurement of throughput and rejection rate using integrated statistical functions (character and form-based)
- Machine Print: typically 1% rejection and 0.1% substitution (depending on print and image quality)
- Handprint: typically 3%-5% rejection, 0.3%-0.5% substitution (depending on print and image quality)

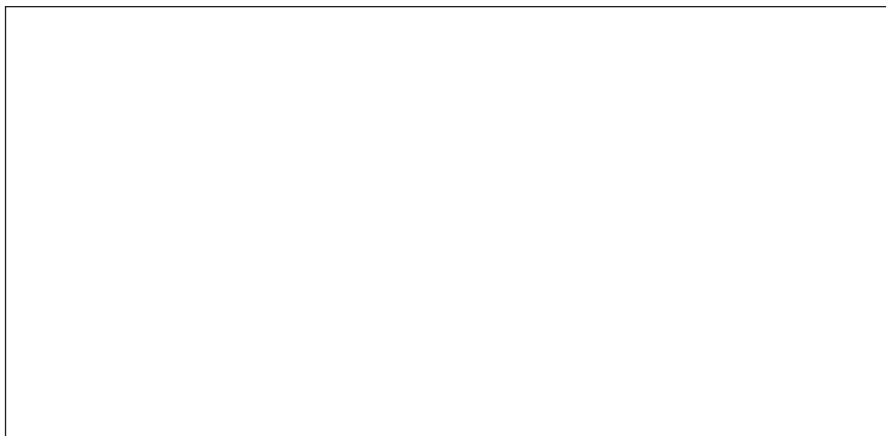
FormsRec® products are available in the following languages:

- English
- German
- French
- Italian
- Polish
- Swedish
- others on request

We reserve the right to make technical changes. FormsRec® and FormsRec AI•DA® are registered trademarks of ICR Software & Systeme GmbH & Co. KG.

Windows and Windows NT are trademarks of Microsoft Corp.. Pentium is a trademark of Intel Corp.. Other products mentioned are registered or unregistered trademarks of their respective owners.

Your authorized FormsRec®-Partner



ICR Software & Systeme GmbH & Co. KG

A Kleindienst Datentechnik
Company

D-88662 Ueberlingen
Germany

Tel.: +49 (0) 7551-9 34-0
Fax: +49 (0) 7551-9 34-20 08

www.icr.de
www.icr-software.com

E-Mail: icr-gmbh@icr.de
E-Mail: info@icr-software.com